

CONTACTING THE APPROPRIATE STAFF MEMBER FLOWCHART

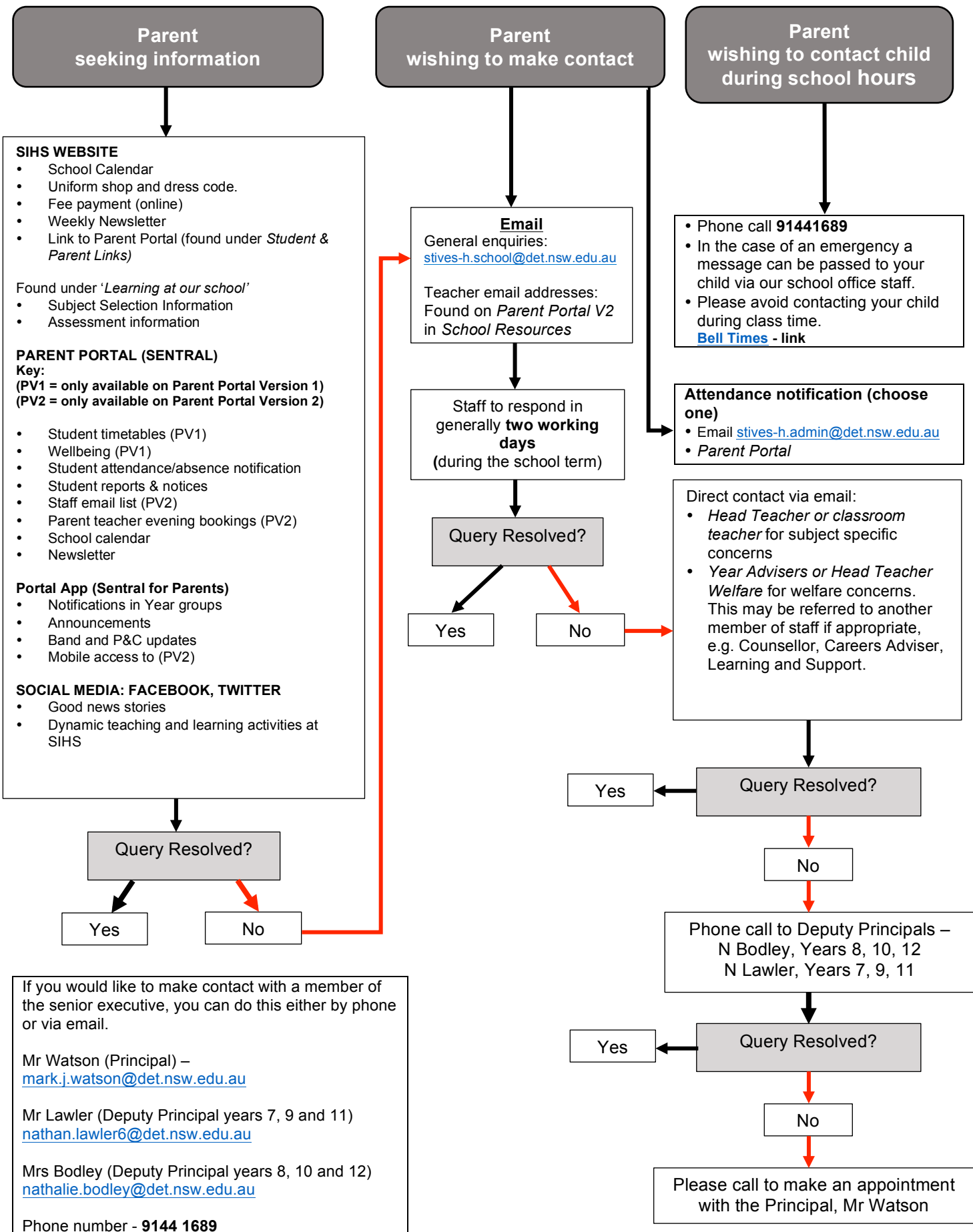
Rationale

St Ives High School recognises the importance of being in partnership with parents/guardians and all those who are involved in the educational process of our students. We seek to develop positive relationships with all involved through appropriate and positive communication.

The purpose of this document is to outline ways the school community can efficiently and effectively communicate with staff members.

Scope

This document applies to all members of the school community.



Note – Parent Portal currently have 2 versions, which are very similar. When on your phone, PV2 should be more user-friendly. Your login details and access point will be the same for both. Here is a link to the [Parent Portal](#).